

Synthetic Cross Linked C-Telopeptide Of Type II Collagen (CTXII) Instruction Manual

SLPA259Hu01

Homo sapiens (Human)

Source	Peptide synthesis
Predicted Molecular Mass	1404.6Da
Buffer Formulation	PBS, pH7.4.
Traits	Freeze-dried powder
Purity	> 95%
Isoelectric Point	6.2
Applications	Immunogen; Blocking Peptide.

SEQUENCE

EK GPDPLQYMRA

USAGE

Reconstitute in 10mM PBS (pH7.4) to a concentration of 0.1-1.0 mg/mL. Do not vortex.

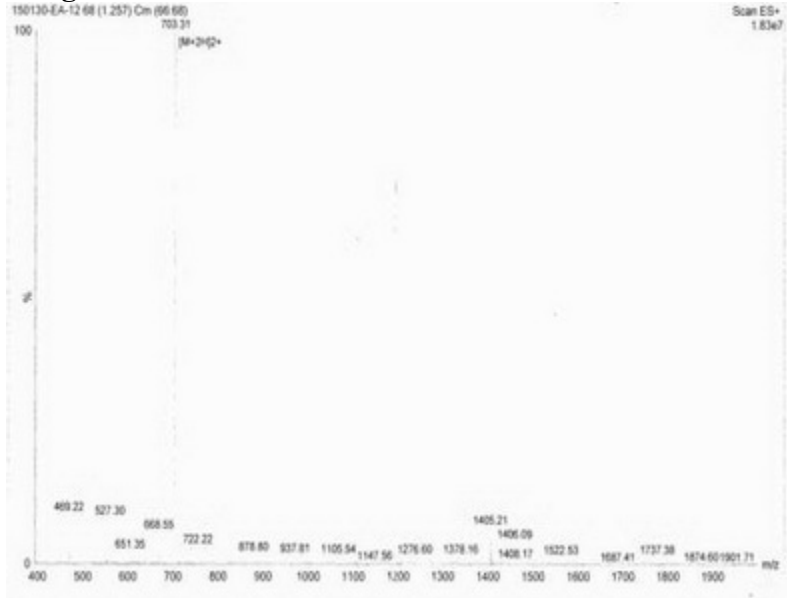
STORAGE

Avoid repeated freeze/thaw cycles. Store at 2-8°C for one month. Aliquot and store at -80°C for 12 months.

STABILITY

The thermal stability is described by the loss rate. The loss rate was determined by accelerated thermal degradation test, that is, incubate the protein at 37°C for 48h, and no obvious degradation and precipitation were observed. The loss rate is less than 5% within the expiration date under appropriate storage condition.

Image



[IMPORTANT NOTE]

The kit is designed for research use only, we will not be responsible for any issue if the kit was used in clinical diagnostic or any other procedures.