

Synthetic Gastrin Releasing Peptide (GRP) Instruction Manual

SLPC436Hu01

Homo sapiens (Human)

| | |
|---------------------------------|-------------------------------------------------------------------------|
| Source | Peptide synthesis |
| Predicted Molecular Mass | n/a |
| Buffer Formulation | PBS, pH7.4, containing 0.01% SKL, 1mM DTT, 5% Trehalose and Proclin300. |
| Traits | Freeze-dried powder |
| Purity | > 90% |
| Isoelectric Point | n/a |
| Applications | Immunogen; Blocking Peptide. |

USAGE

Reconstitute in PBS or others.

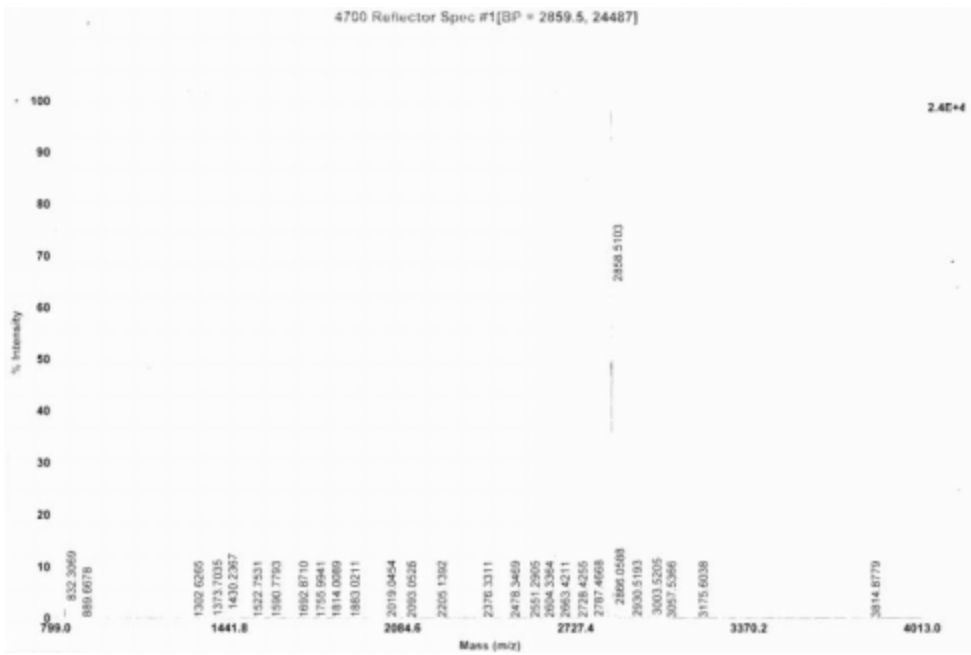
STORAGE

Avoid repeated freeze/thaw cycles. Store at 2-8°C for one month. Aliquot and store at -80°C for 12 months.

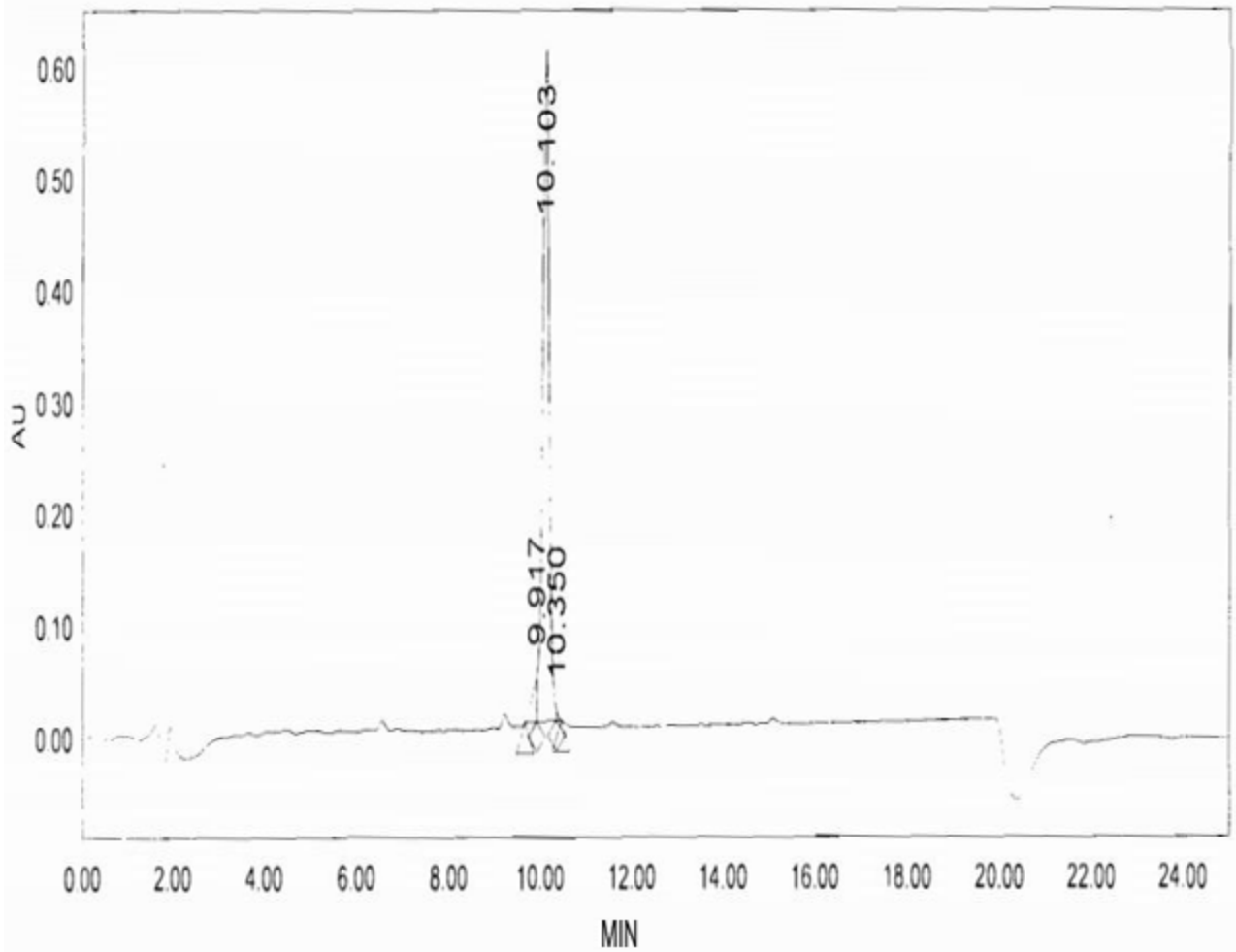
STABILITY

The thermal stability is described by the loss rate. The loss rate was determined by accelerated thermal degradation test, that is, incubate the protein at 37°C for 48h, and no obvious degradation and precipitation were observed. The loss rate is less than 5% within the expiration date under appropriate storage condition.

Image



Mass spectrometry



[IMPORTANT NOTE]

The kit is designed for research use only, we will not be responsible for any issue if the kit was used in clinical diagnostic or any other procedures.